

PDS3000

COUNTERWEIGHT GARAGE DOOR OPENER

SAVE THESE INSTRUCTIONS for future reference

WWW.PDSGARAGEDOORS.COM.AU

FEATURES OF PDS3000

Motor features:

2 remotes

1 wall mountable remote

Light on control box

Manual release bolt

Auto reverse function

Auto force sensing

Option for Safety Sensors

Option for keypad

4 button remote (can add receiver to gate or other doors)

2 Year warranty

CONTROL PANEL BASIC FUNCTION SETTINGS

1 Coding transmitters

Press and hold on "Code" button for 1 second until the LED dot is on (Fig A). Press button on transmitter once, the dot will go off, press the same transmitter button again and the dot will flash fast for 8 times and then return to standby mode.

The transmitter is now coded into the receiver.

Repeat the above steps to code more transmitters.

The receiver has the capacity to store 20 transmitters.

If the LED display flashes "F" and returns to standby mode

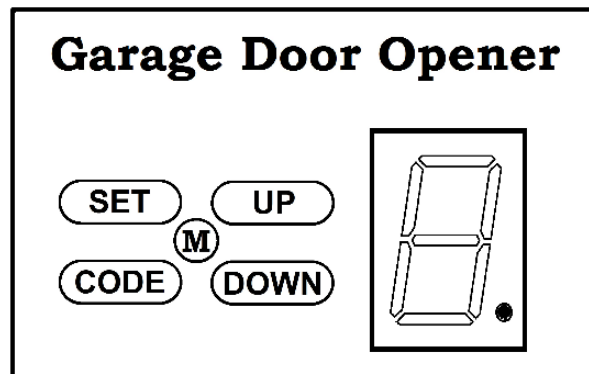
(after you have pressed the "CODE" button), this indicates that the memory storage is full (20 transmitters).

Follow the steps below to delete all transmitters that are stored in the receiver memory.

Press and hold on "CODE" button for more than 8 seconds until the LED flashes "C", all the stored codes are deleted. Only the matched switch on the transmitter is available.

If failed to match the transmitter within 20 seconds, then it will return to standby mode automatically.

The opener is supplied with pre-coded transmitters.



2 Travel limit setting opening & closing force self-learning

Press and hold on "SET" button for 3 seconds until the LED flashes "1".

Press "SET" button again for 1 second "1" should now display as steady (not flashing)

Then adjust the up limit by pressing "UP" button.

Fine tuning "UP" or "DOWN" button to determine the final up limit position (the LED flashes "n" or "u" during opening or closing), then press "SET" button the display turn into "2" automatically.

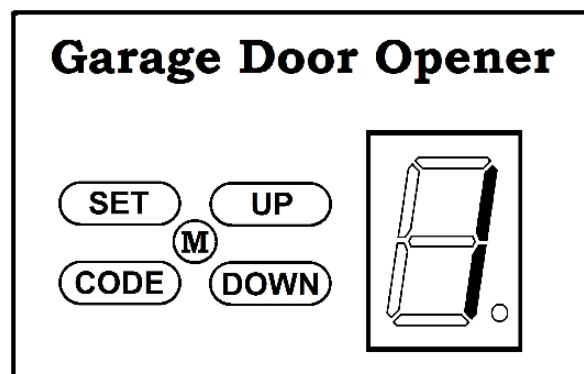
Adjust the down limit by pressing "DOWN" button.

Fine tuning "UP" or "DOWN" button to determine the final down limit position (the LED flashes "n" or "u" during opening or closing), then press "SET" button.

When button is pressed to operate the opener, if the opener stops after operating a little and LED flashes "H" or "C" this indicates there's no hall signal or the opener is overloaded.

The opener will operate a cycle automatically to remember the limit positions and the original opening & closing force before returning to standby mode.

During learning, if the door stops unusually and flashes "H", "C", "O", "L" for 5 seconds this indicates there's no hall signal overload, overtime, wrong limit has been set.



3 Safety reverse force adjustment

Press and hold "SET" button for 3 seconds until the LED flashes "1"
Press "UP" or "DOWN" button until LED flashes "2" then press "SET" button.

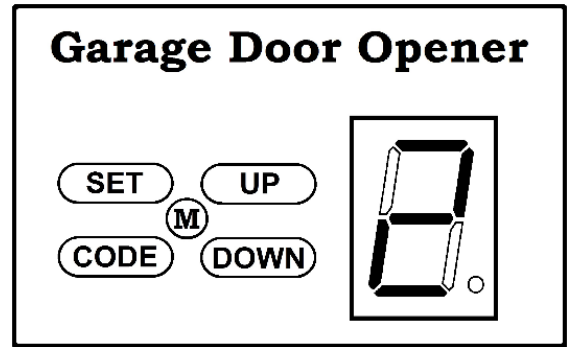
It's now under force adjustment mode. The LED displays the current set force.

Press "UP" button to increase the force and "DOWN" button to decrease the force.

The maximum force is 9 and the minimum is 1.

Press "SET" button to confirm, the opener will return to standby mode.

The default setting of safety force is 5.

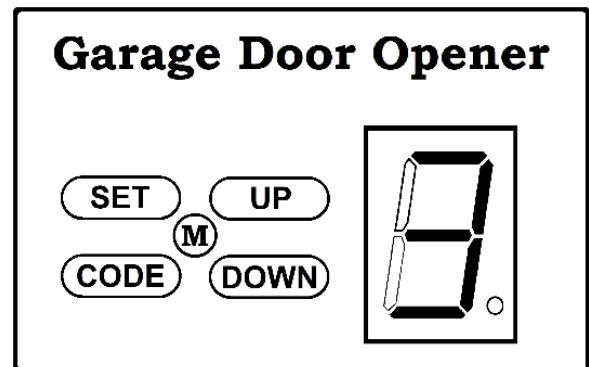


4 Photo beam setting

Press and hold on "SET" button for 3 seconds until the LED flashes "1"
Press "UP" or "DOWN" button until the LED flashes "3", press "SET" button, it's now under photo beam setting mode. The LED displays the current setting.

Press "UP" button, the LED displays "1", the photo beam function is available. Press "DOWN" button the LED displays "0" to cancel this function. Press "SET" button to confirm. The opener returns to standby mode.

The default setting of photo beam is "0".



IMPORTANT
The photo beam function should remain deactivated when photo beam sensors are not installed/in use.

POWER FAILURE - MANUAL RELEASE PROCEDURE

Step 1 *Locate the manual release rod.*

Locate the yellow ring handle manual release turn rod which is positioned between the two steel ramp rails.

Ramp rails are located on the same side of the motor and are attached to the back of the door panel.



Step 2 *Remove the manual release rod.*

Using the yellow ring provided, turn the manual release rod anti-clockwise, this will unwind the manual release rod from the automatic operator drive carriage.

Continue to turn the manual release rod until it come free from the automatic operator drive carriage.



Step 3 *Operate garage door by hand.*

Once the manual release rod is removed completely, you will be able to lift or close the garage door manually by hand. When operating the garage door manually at anytime or in any location through the fully open to fully closed locations, check the surrounding areas each side, behind and in front of the garage door to ensure no obstructions may foul the door operation.



IMPORTANT

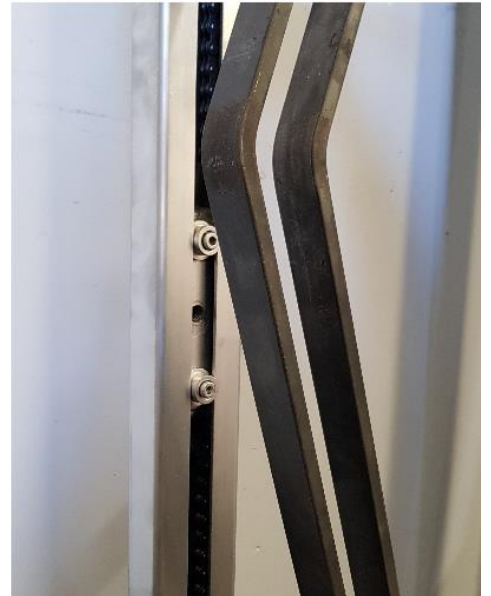
All counterweight garage doors are inherently heavy, it is advised that when using any garage door by hand the operator should remain diligent when operating the door to ensure it does not open or close unexpectedly.

Step 4 *Reconnection of the automatic opener*

To reconnect the automatic operator to the garage door, manually operate the garage door by hand until the automatic operator carriage lines-up with the steel ramp rails.

Once in-line, re-insert the manual release rod into the automatic operator point by turning the release rod clockwise.

Continue to turn the release rod clockwise until the steel bearing on the release rod is located between the steel ramp plates.



SERVICING INFORMATION

We recommend that your garage door is serviced annually to ensure that your attached opener can operate optimally and to allow us to inspect the system for any potential problems that may be occurring.

PDS Garage Doors

38 Yale Drive

Epping (Vic) 3076

Phone: (03) 9408 3418

Email: service@pdsgaragedoors.com.au

Web: www.pdsgaragedoors.com.au